



## SX330

### Two-phase Three-wires Multi-function Electricity Meter Three-phase Four-wires Multi-function Electricity Meter

The meter manufactured by advanced ultra-low power solid-state integration technology and SMT process. The measurement accuracy and stability are guaranteed reliably. The meter can record active and reactive energy, has ability to communicate locally and show alarm indication. It is designed and produced according to the actual power consumption condition of the industry consumers.

#### Key Feature

- Meter with LCD display.
- LCD display has backlight.
- LED indicate for alarm.
- Comply with the international standard IEC 62052-11 and IEC 62053-21.
- Low power consumption (Active consumption  $\leq 2W$ , Apparent consumption  $\leq 4VA$ , Voltage consumption  $\leq 10VA$ )
- Has optical port for local communication.
- Internal super capacitor support power-off display.
- Support ultra-sonic welding
- Support active and reactive energy measurement.
- Support current reverse detection.
- Support meter cover open alarm.
- Support 50 events logs.
- Support 4 tariffs.
- Support 4 channels load profile.
- Maximum demand cycle can be set with the interval of minute, 5 minutes, 10 minutes, 15 minutes, 30 minutes, 60 minutes.

*To Optimize Power Grid Value*

Ordinary (Simple-function)  
Electricity Meter

Multi-function Electricity  
Meter

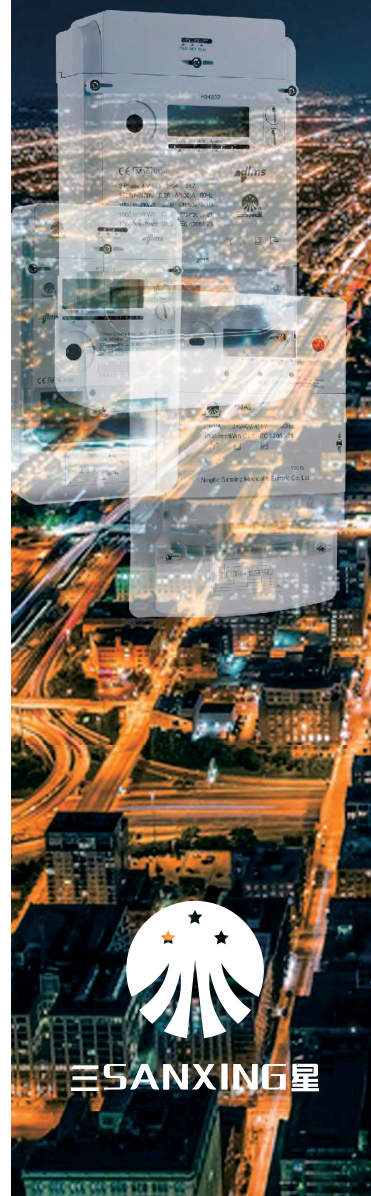
Smart Electricity Meter

Prepayment Electricity Meter

Automatic Meter Reading  
Products

In-home Display Products

Customer Interface Unit  
Products

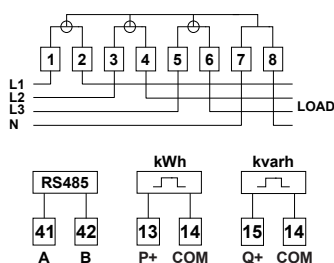


三 SANXING 星

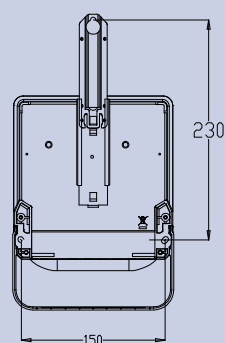
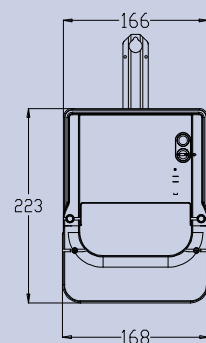
## Technical Specifications

Voltage Ratings	Reference Voltage	3*120/208V ; 3*230/400V
	Operating Voltage Range	80%Un~120%Un
	Supply Frequency	50Hz-60Hz
Current Ratings	Basic Current (Ib)	5A,10A
	Maximum Current (Imax)	40A,60A,80A,
	Starting Current	0.4%Ib
Accuracy	Active Cl.B or Cl.1; Reactive Cl.2	
Power Consumption	Voltage Circuit	≤2W/10VA per phase
	Current Circuit	≤4VA per phase
Insulation Strength	AC Voltage Test	4kV during 1min
	Impulse Voltage Test	1.2/50μs mains connections 6kV
Communication Interface	Optical;RS485	
Temperature	Operation Range	-40~70 °C
	Limit Range for Storage and Transport	-40~80 °C
Protection	Class II	
RTC Accuracy Humidity	≤0.5s/d	
IP Rating	IP54	
Service Life	≥15 years	

## Connection Diagram



## Dimensions



## NINGBO SANXING SMART ELECTRIC CO.,LTD.

Tel: +86-574-88072218

Fax: +86-574-88220583

E-mail: [info@overseas.sanxing.com](mailto:info@overseas.sanxing.com)

Add: No.17, Fenglin Road, Cicheng Town, Jiangbei District, Ningbo, China, 315034

[www.sanxing.com](http://www.sanxing.com)

Copyright ownership belongs to Sanxing

