



# P12S01

## Single-phase Smart Meter

The meter for commercial and industrial customers. Communication capabilities over GSM/GPRS, RF, Optical, RS485, the meters are aimed to be used for AMI/AMR/AMM and smart grids.

### Key Feature

- Import and export active power.
- Import and export reactive power.
- Apparent power.
- Register 14 month of billing data.
- Maximum demand.
- Up to 4tariffs, 100special days, 12season tables, 8week types, 8day tables and 12entries in a day table.

Ordinary (Simple-function)  
Electricity Meter

Multi-function Electricity  
Meter

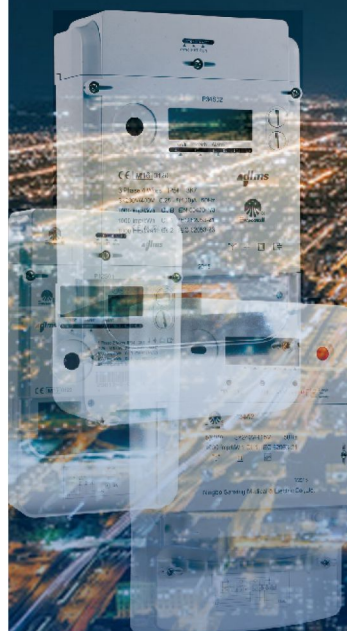
Smart Electricity Meter

Prepayment Electricity Meter

Automatic Meter Reading  
Products

In-home Display Products

Customer Interface Unit  
Products



*To Optimize Power Grid Value*

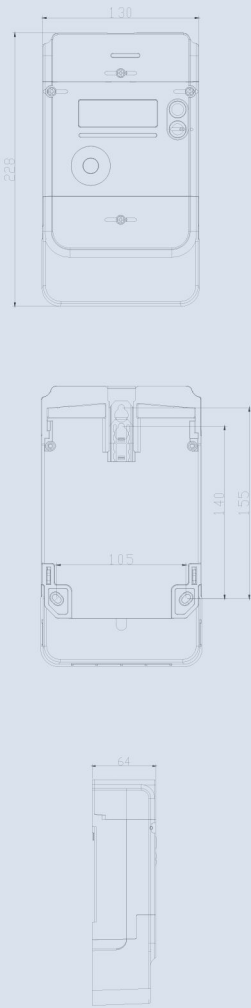


**三SANXING星**

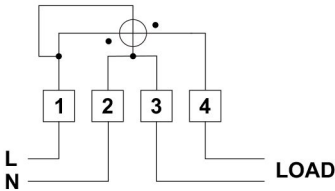
# Technical Specifications

Voltage Ratings	Reference Voltage	240V/400V
	Operating Voltage Range	60%Un~120%Un
	Supply Frequency	50Hz
Current Ratings	Basic Current (Ib)	5A
	Maximum Current (Imax)	100A
	Starting Current	≤4%Ib
Accuracy	Active	Class B
	Reactive	Class 1
Power Consumption	Voltage Circuit (without module)	≤2W, 4VA
	Current Circuit	≤0.5VA
Insulation Strength	AC Voltage Test	4kV during 1min
	Impulse Voltage Test	1.2/50μs mains connections 6kV
Communication Interface		Optical port, GSM/GPRS/RF/RS485
Temperature	Operation Range	-25°C~70°C
	Limit Range	-40°C~80°C
Protection		Power overload Line/Load reversal Current overload Over/Under voltage
RTC Accuracy	Accuracy	≤5 ppm
	Service life	12 years
IP Rating		IP54
Net Weight		1.16kg
Device Life	Service Life	15 years
	UV Resistance	15 years
Internal Control Relay		250V AC/DC, 3A
Battery	Backup Battery Life	15 years

# Dimensions



## Connection Diagram without disconnector



## NINGBO SANXING SMART ELECTRIC CO.,LTD.

Tel: +86-574-88072218  
Fax: +86-574-88220583  
E-mail: info@overseas.sanxing.com  
Add: No.17, Fenglin Road, Cicheng Town, Jiangbei District, Ningbo, China, 315034

